

# East Orange WATER



APRIL 2013

www.eocwd.com

## San Onofre Nuclear Generating Station – we’re making a SONGs request!

Since January 9, 2012, the San Onofre Nuclear Generating Station (SONGs) has been non-operational due to extensive wear in the steam generator tubing in both Units 2 and 3.

SONGs generates 2,200 Megawatts (MW) of electricity – enough to meet the needs of 1.4 Million homes. Just as importantly, it provides essential voltage support. Voltage support – like water pressure – is essential to ensuring that electricity is able to “flow” through electrical lines.

During the past decade, California has made impressive strides in generating “green” power (solar, wind, hydro) and has shut down many fossil-fueled power plants.

Unfortunately, green energy is not as reliable as fossil-fuel energy (at night and when the wind doesn’t blow) and no-one foresaw the

## Read any good meters lately?

You want to do your part to help conserve our precious water. And you want to save money. One way to do this is to monitor your water use by reading your meter.

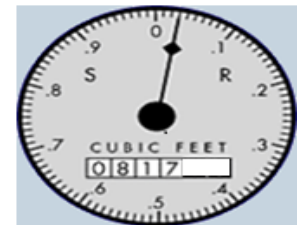
Water meters are not reset between readings. Rather, the number of cubic feet indicated on the

meter is cumulative.

To find out how much you’ve used in any given period, just subtract the reading on your last bill from the current meter reading. The date your meter was last read is indicated on your bi-monthly bill.

For example, suppose you read your meter

today and it indicates 817 units (like the one shown below).



Then you refer to your most recent water bill (read 2 months ago)

**(Continued on Page 2)**

## District Begins FY 2013/14 Budget Deliberations

Each year at this time, the District conducts a process of developing, reviewing and adopting a budget prior to the start of our fiscal year, which runs from July 1 to June 30. Last year’s budget totaled \$5,932,611.

District staff prepare a draft budget which is reviewed with the Budget Committee – comprised of Directors John Dulebohn and Doug Davert – at a series of three meetings. The first meeting was held on March 27<sup>th</sup>, subsequent meetings are scheduled for April 29<sup>th</sup> and May 29<sup>th</sup>. The public is welcome to attend these meetings.

Once a recommendation is received from the Finance Committee, the Budget is forwarded to the Board for approval at their scheduled June 20<sup>th</sup> meeting. Again, we welcome customer input.

## Why are there three charges on my bill?

This is a frequently asked question we receive:

*Q. Why am I charged a Meter Charge and a Capital Facilities Charge in addition to a Water Charge? Why isn't it just one charge?*

*A. After the 1988-1992 drought, the California Legislature encouraged water agencies to separate out fixed costs (those costs that are incurred regardless of whether one gallon of water is sold or millions of gallons) and variable costs (those costs that vary month to month, like water and energy costs), so that if a consumer wanted to reduce their bill, they could gain a benefit from doing so. Laws enacted in the late 90s regarding how fee-supported public agencies*

*(Continued on Page 2)*

possibility that SONGs could be totally shut-down for an extended period of time. This has left Orange County and northern San Diego County particularly vulnerable to energy shortages this coming summer (Note: this was also a concern last summer, but SCE was able to operate a power plant in Huntington Beach last summer; this plant cannot be operated this summer due to permit limitations).

SCE has been working with steam generator experts to correct the problem and enable the restart of the Unit 2 at a reduced load – the Nuclear Regulatory Commission recently indicated that they may allow this to occur.

Twenty percent of the power used in California is used to support water operations – all the way from bringing it from Northern California or the Colorado River, right to your home.

Your water district has been watching this situation very closely, and recently submitted comments to the NRC supporting the safe restart of SONGs.

We have a backup plan in the event SONGs isn't allowed to restart and power supplies are insufficient to meet demands – we have backup generators at strategic locations designed to get us through short interruptions in power. We intend to serve water with no interruptions to our customers!

# Reading a good meter...

## (Continued from Page 1)

and it shows the reading was 787 units at that time. Subtracting 787 from 817 reveals that you used 30 units of water over that two-month period of time.

Multiply the 30 units by 748 and you'll find that you've used 22,440 gallons of water over that two month period.

**One hundred cubic feet (ccf) is equal to one unit or 748 gallons of water.**

Multiply the 30 units by \$2.40 per ccf and the water portion of your bill would come to \$72.00 or less than 1¢ per gallon.

## **Why are there three charges on my bill?**

(Continued from first page)...

calculate their rates and rate increases (Proposition 218 and others) also require this type of billing system. Our district collects variable costs via the "Water" charge, and we collect our fixed costs via the "Meter" and "Capital Facilities" charges.

The term "Meter Charge" on your bill is a phrase that covers a whole category of expenses and is levied based upon the size of your meter (most customers have a ¾" meter); customers are assessed a higher fee as the size of their meter increases. This is because the larger the meter, the larger our system is required to be in order to support the daily water demands for that property, as well as the fire flow that we must have in reserve.

While the Meter Charge may reference a meter, these funds are used to pay for the daily costs of operating all of the equipment used to bring water to your property – including pumps, motors, reservoirs, pipelines and to pay other fixed costs such as the salaries of our employees. These funds are also used to pay for the fixed costs of regional water systems, such as the Metropolitan Water District of Southern California and the Municipal Water District of Orange County.

The "Capital Facilities Fee" is the fee we levy to pay for the rehabilitation and replacement of all of the facilities we operate and maintain with the Meter Charge. Good business and accounting practices dictate that we set up "Reserve Funds" to pay these costs when the facilities reach the end of their useful life. These funds are only used for capital replacement and are not used to fund daily expenses.

## **Avoid Late Charges – Use Online Bill Pay!**

Did you incur a late fee because you went away for a vacation and forgot to pay your water bill?

You can check your account and pay that bill from anywhere in the world using our online bill pay.

Go to our website: [www.eocwd.com](http://www.eocwd.com) and register for an account by clicking on "View/Pay My Bill" on the left side of the screen. On your first visit, you will need to set up a new account by clicking on the link under the "First Time Here?" box. You will need a current email address and your EOCWD account number (listed on your bill). Once you are registered, a confirmation email will be sent with your login and password and you'll be able to login and pay your bill within minutes. There is a small 1% convenience fee when you use this service.

Another way to avoid late charges is to set up automatic payments. **Call our office at (714) 538-5815 if you'd like to start!**